

HOCHIKI

World Class Leaders in Fire Detection Since 1918



PRODUCT CATALOG

UL Fire Detection Systems



World Class Leaders In Fire Detection Since 1918

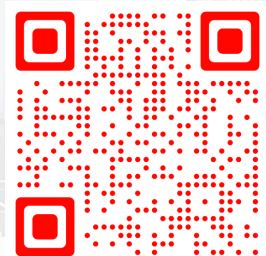
| Our History Timeline

The dates below have been carefully identified as some of the key events in Hochiki's history and together to help identify who Hochiki are today.

April 2, 1918

Japan's first fire alarm manufacturer was established under the corporate name of "Tokyo Hochiki Co., Ltd." at Yurakucho, Kojimachi-ku (now Chiyoda-ku), Tokyo under the investments mainly by life insurance companies. The prospectus tells us that the Company had been established for the purpose of "manufacturing fire, theft and other alarms and selling modern fire-fighting machinery."

- 1920** The world's first addressable fire alarm system was installed by Hochiki Corporation
- 1951** Hochiki produced a rate-of-rise heat detector & succeeded developing an automatic fire detector
- 1967** Hochiki develop an ionisation detector
- 1972** Tokyo Hochiki Co. Ltd became Hochiki Corporation and Hochiki America Corporation opened in the USA
- 1973** An intrinsically safe fire alarm system was developed
- 1975** Hochiki detectors first sold in the UK
- 1993** Hochiki Europe office opened in Gillingham, Kent
- 1995** Hochiki Corporation opened one of the largest testing facilities in the world
- 1996** Hochiki developed the highly reliable and robust ESP protocol
- 1997** Hochiki Singapore Branch Office was opened
- 2001** Hochiki representative office opened in Beijing
- 2010** Hochiki release UK's first intelligent emergency lighting system, FIREscape
- 2011** Hochiki Australia opened
- 2012** The Hochiki Group acquired Kentec Electronics and Hochiki de Mexico S.A. de C.V. was established
- 2013** Hochiki Middle East opened in Dubai
- 2013** Hochiki (Thailand) Co. Ltd opened in Bangkok, Thailand
- 2013** Hochiki Jakarta Rep. Office opened in Jakarta, Indonesia
- 2014** Hochiki Asia Pacific Pte Ltd established
- 2014** Hochiki India Branch Office opened in New Delhi
- 2017** Hochiki Ho Chi Minh Rep. Office opened in HCMC, Vietnam
- 2017** Hochiki Italia established in Verona, Italy. Hochiki release the innovative L@titude fire panel
- 2018** Hochiki release the ACD-E, CO multi-sensor
- 2019** Hochiki Manila Rep. Office opened in Manila, Philippines
- 2022** Hochiki Hanoi Rep. Office opened in Hanoi, Vietnam



COMPANY OVERVIEW

Established in Japan 1918, Hochiki is an independent, multi-national, publicly listed company with over 2000 employees across the globe. One of the world's leading manufacturers of commercial and industrial fire detection and emergency lighting solutions, Hochiki has acquired global acceptance as the benchmark for high-integrity and long-term reliability.

Hochiki's facilities in Japan, the United States of America and Europe design and manufacture products and provide technical support suited to local standards and customer requirements. Total commitment to meeting the needs of individual national markets has reinforced the company's global reputation, resulting in Hochiki products being installed in many prestigious sites and in over 80 countries worldwide.

For over 45 years, Hochiki America has been a supplier of quality smoke detectors to the fire alarm industry. Many of their customers are well-recognized companies such as Simplex (over 20 years), Silent Knight (over 20 years), Radionics, Bosch Potter, Napco and Fike. These long-lasting relationships are no coincidence - they are due to the fact that Hochiki offers the highest in quality workmanship at competitive pricing. Quality is "built in" using only the finest in raw materials and the most advanced automated testing and manufacturing equipment available anywhere.

As the regional hub for sales activities in Southeast Asia, Hochiki Asia Pacific holds a long history in Singapore before formally being established as "Hochiki Asia Pacific Pte. Ltd.".

Presently, Hochiki Asia Pacific has one subsidiary and four representative offices.

91%

Respondents rated product quality as either 'very good' or 'excellent'

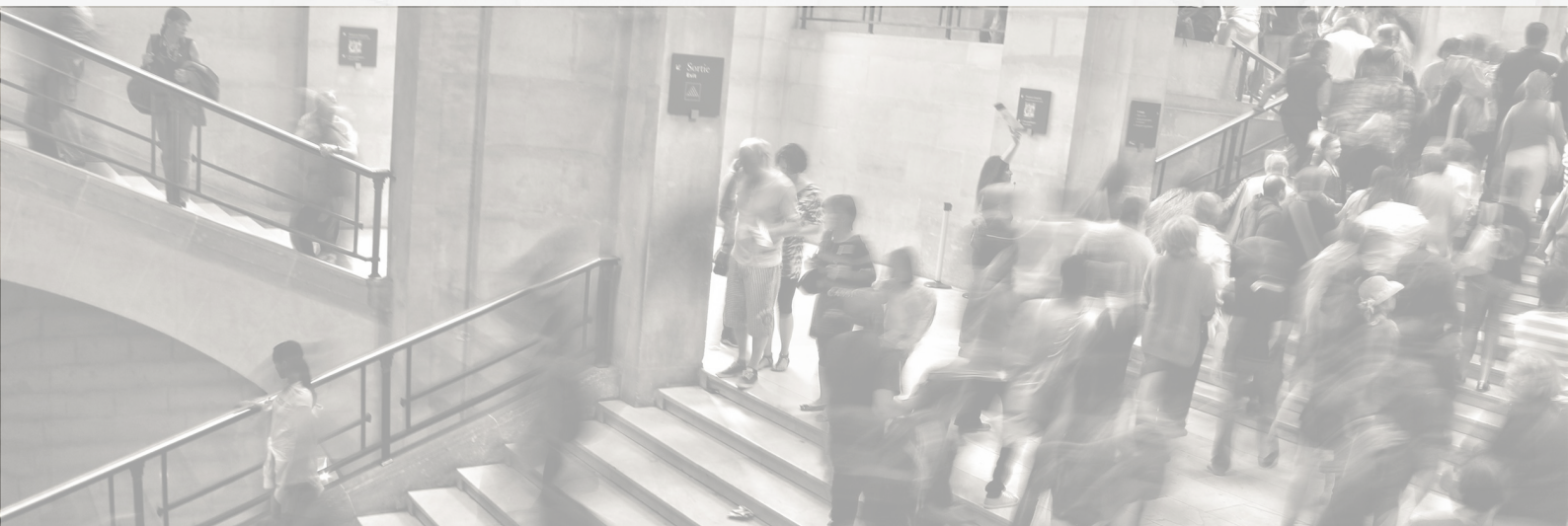
92%

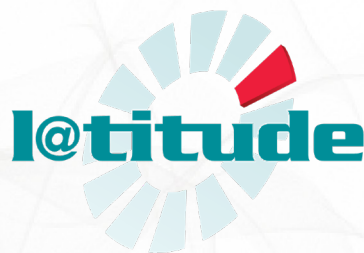
Customers stated our market reputation is 'very good' or 'excellent'

88%

Customers are most likely to recommend our products

*STATS TAKEN FROM THE HOCHIKI CUSTOMER SERVICE SURVEY





Introduction : FireNET L@titude

The all new FireNET L@titude product range of fire alarm control equipment combines the very latest hardware and software to produce a control and indication system, which is powerful, sophisticated, but also user-friendly and intuitive. The highly flexible FireNET L@titude platform can be configured to realize many other control and indication applications, with direct integration into intelligent buildings.

Moving away from the simple, price-driven, competitive model used by most manufacturers today, the FireNET L@titude concept is designed to add value to System Designers, Integrators, Service Providers, and end users. Developed from the “ground up” using the most advanced technology available, FireNET L@titude is one of the most powerful, intelligent, and technically robust fire alarm products available.

Not only do the products and services offered under the FireNET L@titude brand provide solutions to the most technically challenging applications in life safety, FireNET L@titude will deliver added value, market advantage and a competitive edge to your business.

The modular nature of the FireNET L@titude system allows all field wiring to be connected to a passive mother board enabling addition, re-configuration or replacement of all electronic hardware without the need to disconnect any field wiring. This modularity also allows each panel to be customised with addressable loop detection circuits, conventional detection circuits, relay cards, additional sounder outputs or programmable I/O modules as required.

L@TITUDE DISPLAY

L@titude utilises a full colour, 7” 800 x 480 touch screen graphical display to provide a clear, simple and intuitive user interface. 80 character zone location and 80 character device messages allow a clear, concise description of each detection location to be configured. Resistive touch screen technology permits control functions to be available, even when wearing protective gloves.

USER ACCESS

Access to the L@titude menu and control functions is provided by a unique 6 digit pass code or by the optional enable control key switch. Up to 64 individual login accounts can be configured with different profiles and access permissions.

ZONE INDICATORS

Up to 144 zone indicators or 48 zone indicators plus panel printer are available. L@titude supports up to 2000 detector zones and zone indicators.

POWERFUL, NETWORK WIDE CAUSES & EFFECTS

L@titude cause and effect capacity supports 5000 cause and effect entries, with up to 50000 input/output which is dynamically assigned.

POWER SUPPLY OPTIONS

L@titude is available with two power supply options, each available in 230 V or 115 V mains voltages. 5.25 A (supports up to 60 Ah batteries) and 10.25 A (supports up to 100 Ah batteries). Note: Both 4 slot enclosure and 8 slot enclosure with deep cabinet, can house up to 40 Ah batteries.

EXPANSION OPTIONS

L@titude input/output cards can be fitted in spare slots within the panel.

The family includes:

- 8 way conventional detection board
- 4 way sounder output board
- 8 way volt free relay contact board
- 16 channel programmable input/output board

BACKLIGHT CONTROL

The built in light sensor allows the display backlight to be configured to follow the ambient light levels with automatically dim after a period of inactivity or all time fixed brightness.

EVENT LOG

A 10000 entry log records all system activity to 1 second resolution. The log is held in secure memory and is retained when power is removed from L@titude. Powerful filtering allows the log to be sorted by event type, between dates, by zone, by panel and by address. Using the Loop Explorer 2 configuration program, the event log can be downloaded and stored as a comma separated by values (csv) format.

PRINTER OPTION

A 40 character front loading thermal printer prints all events as they occur. The printer can also be used to print all / selected event log entries.



FireNET L@TITUDE - ANALOG ADDRESSABLE FIRE ALARM CONTROL PANEL

TECHNICAL SPECIFICATIONS

2 to 8 LOOP (4 SLOT) ENCLOSURE

Size	Standard Cabinet - 420mm (W) x 590mm (H) x 153mm (D), or 16.5in (W) x 23.2in (H) x 6in (D) Deep Cabinet - 420mm (W) x 590mm (H) x 203mm (D), or 16.5in (W) x 23.2in (H) x 8in (D)
Construction	Mild sheet steel enclosure, 1.5mm, 16 gauge
Cable Entry	Standard Cabinet - 28 knockouts top, 19 knockout back, 1 knockout each side, 2 knockout bottom Deep Cabinet - 38 knockouts top, 19 knockout back, 1 knockout each side, 2 knockout bottom
Optional Semi-Flush Mounting Kit	Semi-Flush Mounting Collar Kit KM5FCRD - Red KM5FCGY - Gray KM5FCBS - Black
Battery Capacity	Standard Cabinet - Up to 28 Ah (Power Sonic PS-12280) Deep Cabinet - Up to 40 Ah (Power Sonic PS-12400)

2 to 16 LOOP (8 SLOT) ENCLOSURE

SIZE	8 Slot Standard Cabinet - 540mm (W) x 720mm (H) x 160mm (D), or 21.3in (W) x 28.3in (H) x 6.3in (D) 8 Slot Deep Cabinet - 540mm (W) x 720mm (H) x 212mm (D), or 21.3in (W) x 28.3in (H) x 8.3in (D)
Construction	Mild sheet steel enclosure, 1.5mm, 16 gauge
Cable Entry	Standard Cabinet - 38 knockouts top, 25 knockout back, 2 knockout each side, 2 knockout bottom Deep Cabinet - 50 knockouts top, 25 knockout back, 2 knockout each side, 2 knockout bottom
Battery Capacity	Standard Cabinet - Up to 28 Ah (Power Sonic PS-12280) Deep Cabinet - Up to 40 Ah (Power Sonic PS-12400)

ALL MODELS

Finish	Epoxy powder coated
Color	Lid & Box - Red, Gray or Black Control Plate - RAL7016
Power supply voltage	120 V AC or 240 V AC
Power supply rating at 24V DC	5.25 A (charges up to 60 Ah) 10.25 A (charges up to 100Ah)
Display	Full color 800 x 480 LCD with resistive touch screen and automatic backlight dimming
Software zones	2,000
Cause and Effects	5,000
Event log	10,000 events, 1 second resolution. Filterable and printable
Detection loops	2 to 16 added 2 at a time (S758 dual loop cards)
Detection loop current	400 milliamps each
AUX 24V Output	2; each rated at 900 mA
NACs	4; each rated at 2.5A (1.3A for System Sensor devices). 4 Class B or 2 Class A
Programmable Relay Outputs	5; 30 V DC 1 Amp
Programmable Inputs	3; designed to be activated by voltage-free contacts
NAC Synchronization	Internal Support of System Sensor, Wheelock, Gentex and Amseco protocols
Printer (OPTIONAL)	40 column, front-loading thermal
Zone LED Indicators (OPTIONAL)	Up to 3 banks of 48 (144) as standard
Maximum Number of Nodes on a Network	127 UL Listed for 127 nodes

*** L@titude Panel Featuring Multiple Languages & Counting ... ***

ENGLISH (EN)	CZECH (CZ)
BULGARIAN (BG)	DUTCH (NL)
CROATIAN (HR)	ITALIAN (IT)
ESTONIAN (EE)	RUSSIAN (RU)
HUNGARIAN (HU)	SLOVENIAN (SI)
PORTUGUESE (PT)	SPANISH (ES)
ROMANIAN (RO)	TAIWANESE / TRAD CHINESE
SERBIAN (RS)	VIETNAMESE
SLOVAKIAN (SK)	BANGLA
TURKISH (TR)	THAI

In the near future ...

DANISH (DA)
NORWEGIAN (NO)
FINNISH (FI)
SWEDISH (SV)
FRENCH
ARABIC
POLISH
...

SIGNALING



OPTIONAL PANEL PERIPHERALS



DUAL LOOP PANEL MODULE (S758)

The Dual Loop Panel Module monitors loop device status and provides status to the panel processor. It holds device configurations and operates in a standalone manner when catastrophic failures occur.



16 CHANNEL I/O INTERFACE CARD (K6006)

The 16 Channel I/O Interface enhances the versatility of the alarm system by providing additional input and output capabilities to the L@titude Fire Alarm Control Panel. Inputs or outputs can be selected for up to 16 individual channels, and are configured in the same way as devices connected to addressable loops of the panel. The 16 Channel I/O Interface can be configured to contribute or act upon cause and effect logic.



MEDIA GATEWAY™ PANEL MODULE (S788)

The Media Gateway™ Panel Module provides connectivity to monitoring centers using IP (Sur-Gard), or dialup connectivity. The Media Gateway™ may also be used to meet integration application requirements.



8 CHANNEL RELAY PANEL (S791)

The 8 Channel Relay Panel Module has 8 voltage-free changeover relay contacts, each of which can be individually programmed. All outputs are configurable in the same way as devices connected to the loops and all may be acted upon by cause and effect logic. These boards are typically used in applications which require more than the five standard relay outputs, such as signaling to other systems or plant control.



NETWORK MODULE (S723)

The L@titude Network Module provides enhanced high-speed communication for networking fire control panels. The network provided by this module can support combinations of L@titude Fire Alarm Control Panels and L@titude Vision units. L@titude Fire Alarm Control Panels can receive events from other panels in the network. The Class X networking used in conjunction with the Network Module provides tolerance against open and short circuit trouble conditions.



PRINTER (S768)

The L@titude Printer is an optional feature for printing fire system events as they occur. The printer is located on the fascia, below the Zone LEDs (if present). It is a thermal printer and never requires replacement ink. Printing is performed on heat-sensitive paper. A trouble message is reported when the paper runs out. The printer includes a front-loading feature for replacing paper rolls.



ZONE LED MODULE (S771)

The Zone LED module contains 48 LEDs and is connected to the LCD Main Processor Board of the FireNET L@titude Fire Alarm Control Panel. A maximum of three Zone LED modules can be connected to provide the fascia with 144 Zone LED indicators.



5.25 A POWER SUPPLY (S406)

5.25 Amp power supplies are capable of charging batteries with capacities ranging from 7 to 60 Ah. The power supply accepts input voltages of 115 VAC to 230 VAC. The 5.25A power supply supplies 4A for panel power and 1.25A for battery charging.



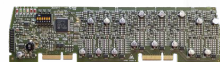
10.25 A POWER SUPPLY (S408)

10.25 Amp power supplies are capable of charging batteries with capacities ranging from 12 to 100 Ah. The power supply accepts input voltages of 115 VAC or 230 VAC. The 10.25A power supply supplies 8A for panel power and 2.25A for battery charging.



4 CHANNEL NAC PANEL MODULE (S793)

Additional NAC output capability can be added to by using 4 Channel NAC Modules. These boards have 4 supervised NAC outputs, each of which can be individually programmed. The circuits can be configured for class A or B operation. The circuits can be configured to act upon cause and effect logic.



8 CHANNEL CONVENTIONAL ZONE PANEL MODULE (S792)

The 8 Channel Conventional Zone Panel Module has 8 supervised detection circuits (Class B). Each circuit can support up to 20 conventional detectors and approved devices. Individual circuits may be configured for trigger resistor or short circuit activation. These circuits may be used for any of the standard input actions and can be configured to contribute to cause and effect logic. Each pair of circuits (e.g., 1 and 2, 3 and 4, etc.) Each pair of circuits (e.g., 1 and 2, 3 and 4, etc.) can be joined to form a single Class A configuration.



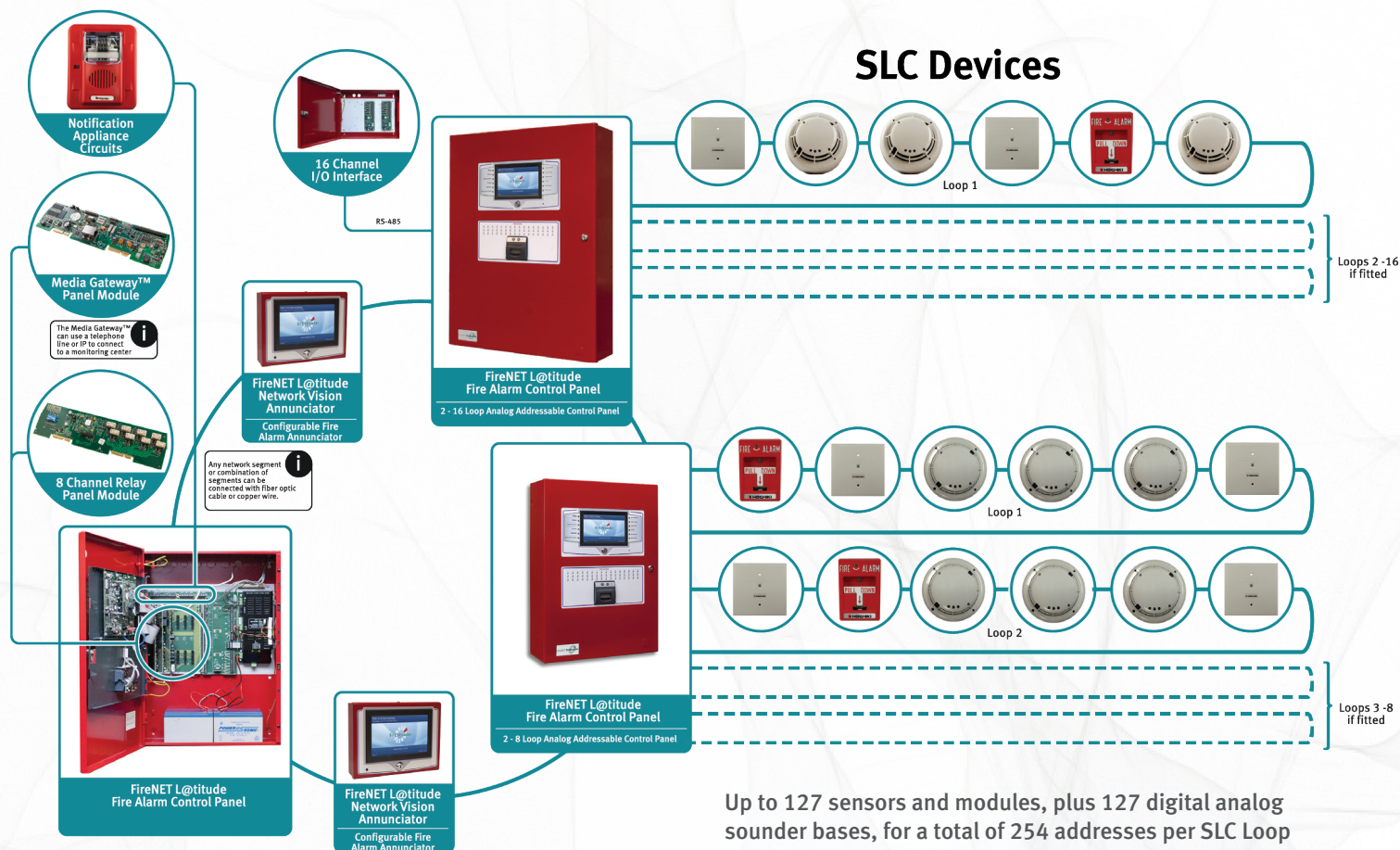
16 CHANNEL I/O INTERFACE PANEL MODULE (S772)

The 16 Channel I/O Interface Panel Module will provide the same functionality as the 16 Channel I/O Interface Card, with the convenience of a plug-in-module.



Specifications subject to change without prior notice

HIGH INTEGRITY CONFIGURABLE NETWORK



Up to 127 sensors and modules, plus 127 digital analog sounder bases, for a total of 254 addresses per SLC Loop

L@TITUDE NETWORK VISION ANNUNCIATOR



The FireNET L@titude Network Vision Annunciator is the most qualified annunciator on the market. It is a full-color graphical display and touchscreen and represents the most versatile annunciator for life safety systems available today.

The Annunciator is a full-function fire alarm repeater that is configurable and application-flexible for use in a variety of applications, such as hospital nursing stations and elevator alarms.

FireNET L@titude Network Vision Annunciators can be configured to fully replicate fire control panel functionality, or to operate as simple, display-only devices for applications where access to fire alarm controls are inappropriate.

Standard Features:

- Full color 7" (800 x 480 pixel) interface
- Replicates information displayed at the FACP
- Automatic display brightness adjustment
- Internal buzzer
- Connects via control panel network terminals
- Low current, 24 DC powered
- Configurable functionality
- Enable key-switch
- Sheet steel enclosure
- Surface or semi-flush enclosure options available

VIZULINX



Vizulinx is a fire alarm management solution which enables you to monitor and control your fire systems remotely.

Highly configurable using an embedded web server and simple configuration wizard, it can be used to pass fire system events via e-mail, SMS, Modbus and BACnet message format using an IP connection.

USB GSM connectivity will be provided for SMS text messaging for sites where internet connectivity is not available.

Vizulinx supports Modbus® over IP, with 1000 point registers as default. Additional 1000 point registers are available by license upgrades, up to a maximum of 10000 points.

Event notifications are triggered and processed immediately, and email or mobilephone messages can be routed to any number of recipients based on the Fire Alarm event types. These include fire, pre-alarm, fault, disable, in test, technical alarm and security.

LOOP EXPLORER 2 CONFIGURATION SOFTWARE



Standard Features:

- Highly configurable
- Enables customization of languages, color schemes, and company logos
- Powerful standard templates allow rapid configuration
- Cause and effect allows the configuration of large, complex networks with ease

Loop Explorer 2 (LE2) is an easy-to-use application for configuring even the most complex networks. LE2 is highly-configurable, enabling customization of color schemes, and company logos.

Cause and effect allows the configuration of large, complex networks with ease. Access to LE2 is via a secure web server, so users with the appropriate credentials have permanent access to the latest version ensuring that the most recent enhancements are always available.

L@ti-View enables the creation of a 2D map of any site or building to monitor fire safety and detection, and automatically switches to an area where a fire device has been activated to allow immediate viewing and investigation of an event. It will also display the relevant emergency assembly and fire control points.

Fully-configurable on-site using an administrator login, L@ti-View supports dual screens allowing a dedicated screen for the 2D graphic map and a separate screen for system management. It also reports any configuration errors, ensuring that the graphics system is maintained and updated whenever the panel configuration is revised.

Standard Features:

- Reports configuration mismatch errors - ensuring that the graphics system is properly maintained and updated whenever there are any panel configuration revisions
- Powerful event log filtering and reporting
- Manage the state of the fire system using a combination of graphical images and system controls
- Programmable macro buttons to perform panel control operations
- Full map navigation using configurable buttons or map areas
- Device analog value reporting
- Perform device and zone disablements / enablements

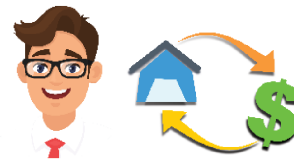
L@TI-VIEW GRAPHICS APPLICATION



ADVANTAGES OF HOCHIKI ASIA PACIFIC

Experiencing Frequent False Alarm ???

Hochiki Addressable Smoke Sensors support daily automatic calibration and compensation; giving early contamination warning and hence minimizes unwanted false alarms.



High Wiring Cost ???

Hochiki's full digital utilized loop protocol gives installers a wide range of choice for cable selection, shielded, cables are not required and thus **BIG SAVINGS** on wiring costs.



Hochiki engineers & authorized distributors are well trained in our system & software programming; expertise supports provided are prompt with reasonable rates!

My premises require expansion, alteration and adjustment to existing Hochiki Fire Alarm System.



Hochiki provides system programming software **FREE OF CHARGE** to our distributors & installers; easy to set up!

Sign up with our Authorized Distributor for training program.



What if I change or lose my PC with system programming software installed?



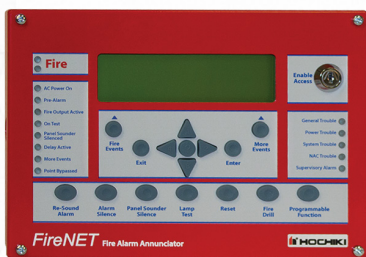
ANALOG ADDRESSABLE FIRE ALARM



FIRENET PLUS® : FNP-1127-R/220V ANALOG ADDRESSABLE CONTROL PANEL

STANDARD FEATURES

- UL 864 9th Edition Listed, FM Approved, CSFM Approved
- 1 SLC (2nd SLC Optional)
- Analog design using Hochiki's advanced DCP protocol for fast & robust communication
- Network capability up to 64 panels with 500 network-wide software zones
- RS-485 bus for panel networking (optional)
- Up to 127 sensors & modules, plus 127 analog sounder bases, for a total of 254 points possible per loop
- Uses standard wire, no shielded cable is required on SLC loops
- Large 8-line x 40-character LCD display (320 characters)
- Built-in RS-232 interface for programming via a PC
- Supports Class B, Class A and Class X SLC loops
- 3 on board programmable Form C relays rated at 1 Amp at 30VDC
- 2 auxiliary power outputs, each rated 360mA at 24 VDC
- 2 on-board Class B NAC circuits rated at 2.3 Amps each (special application) and 1.6 Amps each (regulated continuous)
- Auto-learn feature
- Fire Drill function and Walk Test function
- Powerful & versatile Cause & Effect programming

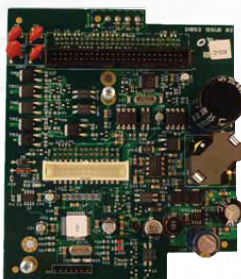


FN-LCD-S-R

SERIAL ANNUNCIATOR

STANDARD FEATURES

- UL Listed, FM Approved, CSFM Approved
- 320 character liquid crystal display (8 line x 40 character)
- Same controls as the FireNET Plus® fire panel (Reset, Panel Sounder Silence, Lamp Test, Alarm Silence, Re-sound Alarm, Fire Drill, Programmable Function, More Events, More Fire Events, Enter and Exit)
- Up to 15 FN-LCD-S serial annunciators may be connected to a FireNET Plus® control panel
- Resides on the FireNET Plus® slave RS-485 line
- Local piezo sounder for event notification
- Supports user codes and firefighter key to enable access and controls
- Powered by FireNET Plus® auxiliary 24VDC or UL fire listed auxiliary 24VDC supply
- Built-in help and alarm information screens
- Surface or flush mount (using trim ring)
- Fire Drill function
- Available color(s): red or gray

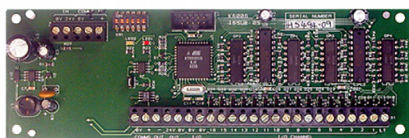


FNP-1127-SLC (FireNET PLUS®)

SINGLE SLC LOOP EXPANDER

STANDARD FEATURES

- Adds one SLC loop to the FireNET Plus® (FNP-1127E series) control panel
- The SLC loop is capable of 127 sensors/modules, plus 127 analog sounder bases, for a potential total of 254 addresses
- The FireNET Plus® 1127E control panel supports one FNP-1127-SLC, for a total of two SLC loops per panel
- Supports Class A, B and X wiring methods per NFPA 72 (Class X requires isolators)
- Fully supervised & power limited SLC loop
- Uses standard wire; shielded cable is not required on SLC loops

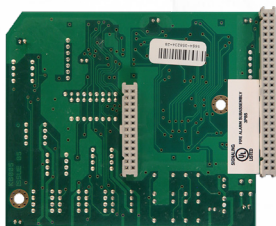


FN-4127-IO

16 CHANNEL INPUT/OUTPUT BOARD (RS-485 BUS DEVICE)

STANDARD FEATURES

- 16 channels of input/output points
- 32 IO boards per FireNET Plus® panel (512 channels of input/output points)
- Each channel configurable as input/output point
- Inputs are opto-isolated non-supervised pulldown type triggered by "dry" contact from input source
- Outputs are open collector transistor pulldown type (100mA max each) that provide "wet" voltage output
- Simple 4 wire connection to control panel (2 for power, 2 for data)
- All inputs/outputs can be assigned to global functions, any event category, and used in network-wide Cause and Effect logic
- Can be mounted locally within control panel enclosure or remotely via FN-ACC accessory enclosure up to 4,000 feet from the panel



FN-4127-NIC

NETWORK INTERFACE CARD

STANDARD FEATURES

- Allows for the expansion of up to 64 panels on a FireNET Plus® system
- Enables information to be transmitted between control panels
- Network protocol designed for tolerance to interference and data corruption
- Each card configured to a unique address through use of a dipswitch
- Transmission distance of up to 4,000 feet
- Uses standard type Belden cable suitable for RS-485 applications
- Network-wide Cause & Effect logic



ACD-V

MULTI-CRITERIA PHOTOELECTRIC SMOKE/HEAT/CO SENSOR

STANDARD FEATURES

- Low profile - only 2.00" high, including base
- Simple and reliable device addressing
- Supports 16 operational modes
- Automatic compensation for sensor contamination
- Uses the noise-immune Digital Communication Protocol (DCP), which utilizes interrupts for fast responses to fires
- Two built-in power/alarm LEDs
- Programmable non-polling LEDs
- Non-directional smoke chamber
- Fully adjustable heat detection -135°F to 150°F
- 10 years CO sensor life span
- Vandal resistant security locking feature



ACC-V

MULTI-CRITERIA PHOTOELECTRIC SMOKE/HEAT SENSOR

STANDARD FEATURES

- Low profile - only 2.00" high, including base
- Simple and reliable device addressing
- Automatic compensation for sensor contamination
- Uses the noise-immune Digital Communication Protocol (DCP), which utilizes interrupts for fast response to fires
- Two built-in power/alarm LEDs
- Programmable non-polling LEDs
- Non-directional smoke chamber
- Fully adjustable heat detection -135°F to 150°F
- UL maximum spacing of 70 feet (heat detection only)
- Vandal resistant security locking feature



ALN-V

PHOTOELECTRIC SMOKE SENSOR

STANDARD FEATURES

- Low profile - only 2.00" high, including base
- Simple and reliable device addressing
- Automatic compensation for sensor contamination
- Built-in fire test feature
- Uses the noise-immune Digital Communication Protocol (DCP), which utilizes interrupts for fast response to fires
- Two built-in power/alarm LEDs
- Programmable non-polling LEDs
- Non-directional smoke chamber
- Vandal resistant security locking feature

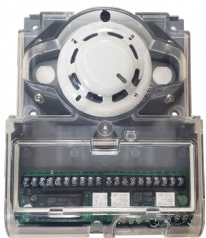


ATJ-EA

FIXED TEMP/RATE OF RISE HEAT DETECTOR

STANDARD FEATURES

- Low profile - only 2.00" high, including base
- Simple and reliable device addressing
- Uses the noise-immune Digital Communication Protocol (DCP), which utilizes interrupts for fast response to fires
- Two built-in power/alarm LEDs
- Programmable non-polling LEDs
- Rate of rise temperature threshold = 15°F/min
- Adjustable threshold temperature = 135°F - 194°F (UL)
- Adjustable threshold temperature = 32°F - 194°F (Actual)
- UL maximum spacing of 70 feet
- Vandal resistant security locking feature

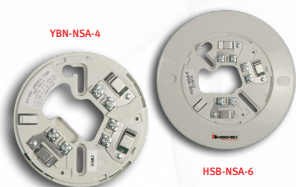


DH-100-A

ADDRESSABLE DUCT SMOKE DETECTOR

STANDARD FEATURES

- New Rugged Durable Housing
- Easy Smoke Testing Port
- Removable Terminal Cover
- Durable Steel Base, Silicone Gaskets, Polycarbonate Housing
- Multi-Voltage Compatibility
- Installs quickly and easily
- No screens or filters to clean
- UL 268A Listed

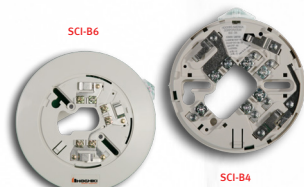


HSB-NSA-6 / YBN-NSA-4

ADDRESSABLE SENSOR BASES

STANDARD FEATURES

- UL & ULC Listed
- 2-wire loop connection
- Designed for use with all addressable sensors
- Plastic tamper lock feature
- Rugged design with screw terminals for wiring connections
- Optional remote LED wiring configuration available



SCI-B6 / SCI-B4

SHORT CIRCUIT ISOLATOR SENSOR BASES

STANDARD FEATURES

- UL Listed
- Ability to detect short circuit conditions
- Designed for use with all DCP analog sensor
- Available in 4 and 6 inch models
- Built-in LED indication upon short circuit condition
- Contains a security locking tab for tamper protection



ASB

ADDRESSABLE SOUNDER BASE

STANDARD FEATURES

- UL269 and UL464 Listed
- Programmable evacuation codes - Continuous, Temporal Code 3 and March Code
- Separate addresses range (128-254) for easy Cause and Effect programming
- Uses the noise-immune Digital Communication Protocol (DCP), which utilizes interrupts for fast response to fires
- Programmable activation by General Alarm, by zone and/or by individual address
- Up to 127 Sensors and 127 ASB's can be on one SLC loop
- High sound pressure level (85dB SPL at 10 ft.)



ASBL

ADDRESSABLE SOUNDER BASE - LOW FREQUENCY

STANDARD FEATURES

- UL269 and UL464 Listed
- 520 Hz Low Frequency Sounder
- Programmable evacuation codes - Continuous, Temporal Code 3 and March Code
- Separate addresses range (128-254) for easy Cause and Effect programming
- Uses the noise-immune Digital Communication Protocol (DCP), which utilizes interrupts for fast response to fires
- Programmable activation by General Alarm, by zone and/or by individual address
- Up to 127 Sensors and 127 ASB's can be on one SLC loop
- Programmable activation by General Alarm, by zone and/or by individual address

The analog addressable module product line utilizes the patented Hochiki Digital Communication Protocol (DCP) for fast reliable communication to the control panel. The modules cover a variety of applications including contact monitoring, output, relay function, and short circuit isolation. These modules operate on Class A or Class B SLC loops, allow 127 devices per DCP loop and are available in bone color.

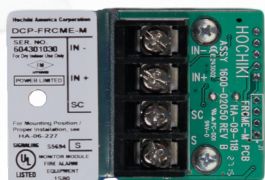


DCP-FRCMA/-I

FAST RESPONSE CONTACT MODULE

STANDARD FEATURES

- Provides a Class A or Class B Supervised input
- UL 864 9th Edition Listed
- Uses the noise-immune Digital Communication Protocol (DCP), which utilizes interrupts for fast response to fires
- Up to 127 modules can be placed on a single SLC loop
- Bi-Colored indicating LED provides module status
- Yellow LED indicates a short circuit condition (FRCMA-I version)
- Can be programmed to monitor Normally Open (NO) or Normally Closed (NC) contacts
- Accepts up to 14 AWG wire
- Available model
DCP-FRCMA
DCP-FRCMA-I



DCP-FRCME-M

STANDARD FEATURES

- UL864 9th Edition Listed
- Single input contact monitor
- Fast, reliable contact monitoring utilizing the Hochiki DCP (Digital Communications Protocol)
- 127 devices can be used per DCP loop
- Can be programmed to monitor Normally Open (NO) or Normally Closed (NC) contacts
- Operates on Class A or Class B SLC loop
- Accepts up to 12 AWG wire
- Available model
DCP-FRCME-P
DCP-FCME-M



DCP-DIMM

DUAL INPUT MONITOR MODULE

STANDARD FEATURES

- Provides two Class B Supervised Inputs
- Monitoring points, only uses one SLC address
- UL 864 9th Edition Listed
- Uses the noise-immune Digital Communication Protocol (DCP), which utilizes interrupts for fast response to fires
- Up to 127 modules can be placed on a single SLC loop
- Bi-Colored indicating LED provides module status
- Can be programmed to monitor Normally Open (NO) or Normally Closed (NC) contacts
- Accepts up to 14 AWG wire



DCP-CZM

CONVENTIONAL ZONE MODULE

STANDARD FEATURES

- UL 864 9th Edition Listed
- Provides an address point for a zone of up to 25 conventional smoke detectors
- Blinks green when polled. Latched on red (controlled by panel) when activated
- Device address can be programmed with a handheld programmer. Device address- ranges from 1 to 127
- Compatible with Class B and Class A wiring
- Auxiliary power source provides power for the zone of detectors
- Compatible with conventional detectors, SOC-24V, SOC-24VN, SLR, SIJ, DCD, DFE and SIH series
- Compatible with TH series linear heat cables from Proline Protection Systems



R2M SERIES

DUAL RELAY MODULE

STANDARD FEATURES

- Provides two independently configurable Form C relay contacts, using one SLC address
- UL 894 9th Edition Listed
- Uses the noise-immune Digital Communication Protocol (DCP), which utilizes interrupts for fast response to fires
- Up to 127 modules can be placed on a single SLC Loop
- Bi-Colored indicating LED provides module status is software controlled and can be programmed to blink red or green when polled
- Accepts up to 14 AWG wire
- Programmable activation by General Alarm, by zone and/or by individual address
- Available model
DCP-R2ML
DCP-R2ML-I
DCP-R2MH
DCP-R2MH-I



DCP-SOM-A/AI

SUPERVISED OUTPUT MODULE

STANDARD FEATURES

- Provides a Class A or Class B Supervised Output circuit rated for 2A at 24VDC
- UL 864 9th Edition Listed
- Uses the noise-immune Digital Communication Protocol (DCP), which utilizes interrupts for fast response to fires
- Up to 127 modules can be placed on a single SLC Loop
- Bi-Colored indicating LED provides module status
- Flexible application
- Accepts up to 14 AWG wire
- Programmable evacuation codes - Continuous, Temporal Code 3 and March Code
- Programmable activation by General Alarm, by zone and/or by individual address
- Available model
DCP-SOM-A
DCP-SOM-AI



DCP-AMS-KL

INTELLIGENT ADDRESSABLE MANUAL PULL STATIONS

STANDARD FEATURES

- Single Action (Pull)
- Addressable integrated design
- All metal construction
- Extremely easy to operate
- Bi-colored status LED indicates Standby and Alarm conditions
- Enclosed switch with glass rod (included)
- Terminals accept up to 14 AWG wire
- Surface mount back box available
- ADA compliant
- Key lock for reset using standard CAT 30 key



DCP-AMS-KL-LP

INTELLIGENT ADDRESSABLE MANUAL PULL STATIONS

STANDARD FEATURES

- Dual Action (Lift & Pull)
- Addressable integrated design
- All metal construction
- Extremely easy to operate
- Bi-colored LED indicates Standby and Alarm conditions
- Enclosed switch with glass rod (included)
- Terminals accept up to 14 AWG wire
- Surface mount back box available
- Key lock for reset using standard CAT 30 key



DCP-AMS

INTELLIGENT ADDRESSABLE MANUAL PULL STATIONS

STANDARD FEATURES

- Single Action (Pull)
- Addressable integrated design
- All metal construction
- Extremely easy to operate
- Bi-colored status LED indicates Standby and Alarm conditions
- Enclosed switch with glass rod (included)
- Terminal accept up to 14 AWG wire
- Surface mount back box available
- ADA compliant (except LP models)



DCP-AMS-LP

INTELLIGENT ADDRESSABLE MANUAL PULL STATIONS

STANDARD FEATURES

- Dual Action (Lift & Pull)
- Addressable integrated design
- All metal construction
- Extremely easy to operate
- Bi-colored status LED indicates Standby and Alarm conditions
- Enclosed switch with glass rod (included)
- Terminals accept up to 14 AWG wire
- Surface mount back box available

CONVENTIONAL FIRE ALARM



HCV

CONVENTIONAL FIRE ALARM CONTROL PANEL

STANDARD FEATURES

- Fully compliant with & tested to BS EN54-2 and BS EN54-4
- 2-wire Annunciator
- Fully programmable using simple menu options
- Simple, single board construction
- Installer friendly
- Compatible with wide range of detection devices
- Two monitored NAC outputs
- 3 Amp power supply
- Auxiliary power output
- Adjustable sounder delay time
- NAC configuration options
- Zonal NAC delay detectors only
- Zonal NAC delay call points only
- Coincidence input selection
- I.S. Barrier selection by zone
- Short circuit fire by zone
- Non latching zones
- Silent zones
- Zone input delay
- Available model
HCV-2/230V
HCV-4/230V
HCV-8/230V



HCP-1008EDS

STANDARD FEATURES

- UL 864 9th Edition Listed
- Large system capacity
- Modular design
- Each indicating circuit can be configured as Silenceable or Non-Silenceable
- Audible may be configured as Steady, Temporal Code, California Code or March Time
- Each initiating circuit can be configured as Alarm, Supervisory, Waterflow or Trouble
- Two LEDs per initiating circuit; one for Trouble and one for Status
- Initiating and indicating circuits may be individually disconnected by a DIP switch
- Configurable Signal Silence Inhibit, Auto Signal Silence, Two-Stage Operation and One Man Walk Test
- Subsequent Alarm, Supervisory and Trouble operation
- Two outputs for 4 wire resettable smoke power supply (200 mA Max. each)
- Auxiliary relay contacts for Common Alarm and Common Supervisory as well as a Common Trouble Relay (Each relay contact Form C, 28 VDC @ 1 Amp (resistive))
- RS-485 Interface for HRA-1000 Remote Multiplex Annunciators
- Interface for Remote Trouble Indicator
- Easy configuration via push buttons and DIP switches on the front panel
- Fully site or field programmable indicating circuits and auxiliary relays
- Extensive transient protection
- Slide-in labels for zone identification
- 6 Amp or 12 Amp power supplies available
- Removable door for easy installation and servicing
- Removable terminal blocks for easy wiring and servicing

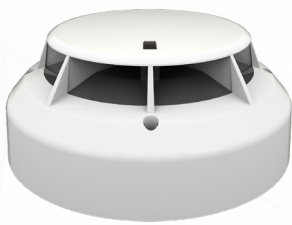


HCVR-3

CONVENTIONAL RELEASING FIRE ALARM CONTROL PANEL

STANDARD FEATURES

- UL 864 Listed and FM Approved
- Three detection zones
- Any single zone or any combination of zones can be configured to release
- Fully programmable using simple menu options
- Simple, single board construction
- Installer friendly
- Compatible with wide range of detection devices
- Configurable first stage NAC delays
- Configurable detection delays
- Built-in Manual Release switch and separate circuit
- Compatible with FirePro Xtinguish™
- Compatible with various releasing valves
- Configurable releasing delays up to 60 seconds in 5 second intervals
- Configurable releasing duration up to 5 minutes in 5 second intervals
- Releasing countdown timer displayed on the LCD
- Supports up to seven HCVR-SDU or HCVR-AB
- Built-in relays for Fire, Trouble, Stage 1, Stage 2, Extract and Local Fire



SOE-24V

CONVENTIONAL PHOTOELECTRIC SMOKE DETECTOR

STANDARD FEATURES

- High signal-to noise and sensitivity stability are effective in a wide range of environmental conditions
 - Wide viewing angle alarm indicators
 - Automatic drift compensation and maintenance indication
 - Built-in magnetic test feature
 - Break-away, hidden locking feature for use with NS bases
 - Optimized reduction to false alarms and enhanced reaction time to real fires
 - UL 268 7th Edition listed smoke detector
 - Test with Smoke Sabre aerosol cans or the Testfire 1000/1001 or 2000/2001 with TS3 smoke capsules
- *Refer to Conventional Detectors Technical Bulletin Rev 07/21



SOE-24H

CONVENTIONAL PHOTOELECTRIC SMOKE AND HEAT DETECTOR

STANDARD FEATURES

- High signal-to-noise and sensitivity stability are effective in a wide range of environmental conditions
 - Wide viewing angle alarm indicators
 - Automatic drift compensation and maintenance indication
 - Built-in magnetic test feature
 - Break-away, hidden locking feature for use with NS bases
 - Optimized reduction to false alarms and enhanced reaction time to real fires
 - UL 268 7th Edition listed smoke detector & UL 521 7th Edition listed heat detector
 - Test with Smoke Sabre aerosol cans or the Testfire 1000/1001 or 2000/2001 with TS3 smoke capsules
- *Refer to Conventional Detectors Technical Bulletin Rev 07/21



SOC-24VN

CONVENTIONAL PHOTOELECTRIC SMOKE DETECTOR

STANDARD FEATURES

- 12 or 24VDC
- 360° view of detector status LED
- Micro fine bug screen capable of rejecting steam
- Advanced engineered non-directional smoke chamber
- Low profile - only 2.00" high, including base
- 2 or 4 wire base compatibility, relay bases available
- Highly stable operation, RF/Transient protection
- Low standby current, 59 μ A at 24 VDC
- One Bi-colored built-in power/sensitivity supervision/ alarm LED
- Automatic Sensitivity window verification function meets outlined requirements in NFPA 72, Chapter 2 & 7, Inspection, Testing and Maintenance

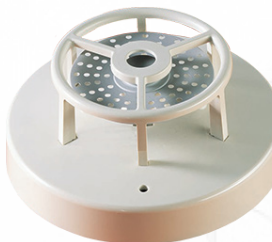


DCD-135/190

FIXED TEMPERATURE AND RATE OF RISE HEAT DETECTOR

STANDARD FEATURES

- UL Listed, FM Approved, CSFM Approved
- Available models: 135°F fixed temperature/rate of rise (DCD-135) or 190°F fixed temperature/rate of rise (DCD-190)
- UL Listed spacing up to 70 feet by 70 feet
- 2 or 4 wire base compatibility, relay bases available
- Highly stable operation, RF/Transient protection
- Two built-in power/alarm LEDs confirm detector status (360° viewing)
- Available color(s): bone or white
- Rate of rise temperature threshold: 15°F/min



DFE-135/190

FIXED TEMPERATURE HEAT DETECTOR

STANDARD FEATURES

- UL Listed, CSFM Approved
- Available models: 135°F fixed temperature (DFE-135) or 190°F fixed temperature (DFE-190)
- Self-restoring
- Contact rating of 100mA
- Latching LED base available
- Available color(s): bone or white



DSC-EA

RATE OF RISE THERMAL DETECTOR

STANDARD FEATURES

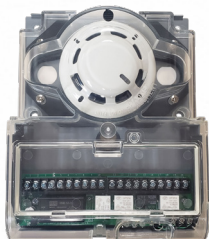
- The DSC features a slim design which combines visual appeal with a high standard of reliability
- The design of the DSC enables the detector to operate in locations where the temperature is likely to increase suddenly should a fire develop
- The operating characteristics of DSC is a key feature of the product enabling a very cost effective solution for the use of heat detectors. This detector consumes no current in standby, which enables an unlimited number of detectors to be connected on the same detection wires



SPC-24

STANDARD FEATURES

- Microprocessor based for reliability
- Simple setup and alignment with signal strength LEDs
- Provides 60 feet on center linear protection at a range of 32.8 feet to 328 feet
- Automatic compensation for signal drift or dirty lens
- Three field adjustable sensitivity settings
- Form A alarm and Form B trouble contacts
- Calibrated filters available to verify sensitivity (purchased separately)
- Color-coded emitter (purple) and receiver (green) labels for easy recognition
- Adjustable to one of the three obscuration settings of 25%, 50% or 70% per span
- Voltage and RF transient protection
- External red LED when alarm condition is indicated



DH-100-P

CONVENTIONAL DUCT SMOKE DETECTOR

STANDARD FEATURES

- New Rugged Durable Housing
- Easy Smoke Testing Port
- Removal Terminal Cover
- Durable Steel Base, Silicone Gaskets, Polycarbonate Housing
- Compatible with building automation and fire alarm systems
- Installs quickly and easily
- No screens or filters to clean
- UL 268A Listed



HPS-SAK

MANUAL NON-CODED PULL STATIONS

STANDARD FEATURES

- Single Action (Pull)
- UL Listed, CSFM Listed
- All metal construction
- Extremely easy to operate
- Enclosed switch with glass rod (included)
- 10 Amps at 120 VAC
- Available in Spanish (HPS-DAH/S)



HPS-DAK

MANUAL NON-CODED PULL STATIONS

STANDARD FEATURES

- Dual Action (Lift & Pull)
- UL Listed, CSFM Listed
- All metal construction
- Extremely easy to operate
- Enclosed switch with glass rod (included)
- 10 Amps at 120 VAC
- Available in Spanish (HPS-DAH/S)



HPS-SAK-EX/WP

EXPLOSION PROOF/WEATHERPROOF MANUAL PULL STATION

STANDARD FEATURES

- Single Action (Pull)
- UL Listed, CSFM Listed
- Compatible with all Hochiki control panels
- All metal construction
- Rated class I group B (hydrogen) C&D, class II groups E, F, G, class III, 4X outdoor
- Weatherproof
- Corrosion-resistant construction
- Latching alarm levers
- Key-locked reset
- Optional glass break rod



HPS-SAH-WP

WEATHERPROOF MANUAL PULL STATIONS

STANDARD FEATURES

- Single Action (Pull)
- 10A, 120 VAC contacts
- Rugged die-cast aluminum housing
- Neoprene sealing gasket
- Corrosion-resistant construction
- Latching pull-down lever
- Screw terminal connections



HCVR-AS-R

EXTINGUISHANT ABORT SWITCH

STANDARD FEATURES

- UL Listed and FM Approved
- Capable of aborting releasing operation



HCVR-DS-R

DISCONNECT SWITCH

STANDARD FEATURES

- UL Listed and FM Approved
- Physical switch provides NPFA-compliant disconnect solution for releasing service

VOICE EVACUATION PANELS & NOTIFICATION APPLIANCES



FNV-MP & FNV-DP

HIGH RISE VOICE EVACUATION SYSTEMS

STANDARD FEATURES

- UL 864 9th Edition Listed
- True multiplex 6 channel distributed audio
- Integrated Fire Phone System (optional)
- Modular system - components added as needed
- Integrated 2 Channel Digital Message Repeater
- Live Microphone paging to any zones
- Fast RS-485 communication protocol
- Fully supervised
- Easy installation and operation
- Natural voice sound recordings
- Built-in alarm evacuation and alert signals
- Up to 4 minute message capacity
- Compatible with 12VDC or 24 VDC fire alarm panels
- UL Listed to be integrated with FireNET® 2127/4127
- 3 minute message restart on microphone key
- Up to 256 distributed panels



HSSPKXLP SERIES

SPEAKERS AND MULTI-CANDELA SPEAKERS AND SPEAKERS/STROBES

STANDARD FEATURES

- Strobe Nominal Voltage 24 VDC
- Tamperproof Field Selectable candela options of 15,30,75,95 & 115
- Speaker only models can be wall or ceiling mounted
- Unit Dimensions: 6.1" x 1.88"
- High Quality dBA Output
- Frequency Range 400-4000Hz
- Input Terminals supports 12 to 18 AWG
- Field selectable power taps: 1/8W, 1/4W, 1/2W, 1W, 2W and 4W
- Field Selectable Speaker Voltage 25 or 70.7 VRMS Standard
- Strobe maintains constant flash rate (1Hz) regardless of input voltage
- Available color(s): red or off-white
- Available model
HSSPK24-1575WLPR
HSSPK24-1575WLPWHSSPK24-1575WLPPR
HSSPK24-1575WLPPW
HSSPK24WLPR
HSSPK24WLPPW
HSSPK24WLPPR
HSSPK24WLPPW
HSSPK24CLPR
HSSPK24CLPW
HSSPK24CLPPR
HSSPK24CLPPW
HSSPKCLRR
HSSPKCLPW



FNV-FJ

STANDARD FEATURES

- Fire Phone accessories give the FNV system two way communication capability
- Fire Phone jacks are mounted on a Brushed Stainless Steel Single Gang Plate



FNV-FH

PORTABLE HANDSET

STANDARD FEATURES

- Available colour(s): red



FNV-TCR

TELEPHONE CABINET

STANDARD FEATURES

- Holds 6 FNV-FH portable handset
- Surface/semi-flush mount
- Available colour(s): red



HE SERIES (HE/HES/HEH)

HORNS AND MULTI-CANDELA STROBES AND HORN/STROBES

STANDARD FEATURES

- Wall mount
- Nominal Voltage 12VDC and 24 VDC
- Tamperproof 24VDC units have field selectable candela options of 15,30,60,75 and 110 candela
- Unit Dimensions: 5" high x 4.5" wide x 2.5" deep
- Input terminals supports 12 to 18 AWG
- Switch selection for high or low dBA
- Switch for chime, whoop, mechanical and 2400Hz tone
- Switch for continuous or temporal 3: (not available on whoop tone)
- Surface mount with the HSB (Hochiki surface mount box)
- Silence horn while strobes remain flashing
- Wide voltage range 8-17.5VDC (12VDC units) 16-33VDC
- Available color(s): red or off-white
- Available model
HES24-1575WR
HES24-1575WW
HES24-177WR
HES24-177WW
WHES24-75WR
WHES24-75WW
HEC24-1575WR
HEC24-1575WW
HEC24-1575PWR
HEC24-1575PWW
HEC24-177WR
HEC24-17WW
WHE24-75WR
WHE24-75WW
HEH24-WR
HEH24-WW
HES3-24PWW
HEC3-24WR
HEC3-24WW
HEC3-24PWP
HEC3-24PWW



HC SERIES

MULTI-CANDELA STROBES AND HORN/STROBES

STANDARD FEATURES

- Ceiling mount
- Nominal Voltage 24 VDC
- Tamperproof Field Selectable candela options of 15,30,75,95,115 & 150
- Unit Dimensions: 6"x 2.6"
- Input Terminals support 12 to 18 AWG
- Switch Selection for High or Low dBA
- Wide Voltage Range 16-33 VDC
- Switch Selection for 2400Hz or Mechanical Tone
- Switch Selection for Continuous or Temporal 3
- Surface Mount with the HCSB (Hochiki Ceiling Surface Mount Box)
- Silence Horn While Strobes Remain Flashing
- Available color(s): red or off-white
- Available model
HCS24CR
HCS24CW
HCS24PCR
HCS24PCW
HCC24CR
HCC24CW
HCC34PCR
HCC24PCW



HHLF SERIES

LOW FREQUENCY HORNS

STANDARD FEATURES

- Nominal voltage 24 VDC
- Unit Dimensions: 6.125" H x 5.5" W x 1.625" D
- Synchronize horn with Hochiki HTSM Synchronization Control Module
- Prewire entire system, install mounting bracket, then install signals
- Input terminals accept 12 to 18 AWG
- Produces a 520Hz square wave, temporal 3 tone
- Jumper selection for normal or loud dBA
- Temporal 4 pattern available when used with Hochiki HTSM Synchronization Module
- Temporal 4 520Hz measured per ANSI/UL 2075
- Tamperproof re-entrant style grill and locking screw (optional use)
- Available color(s): red or off-white



HHSLF SERIES

LOW FREQUENCY HORN/STROBES

STANDARD FEATURES

- Nominal voltage 24 VDC
- Unit Dimensions: 6-1/2" (16.5cm) high x 5-1/2" (14cm) wide x 2" (5cm) deep
- Produces a 520 Hz square wave, temporal 3 tone
- Fixed candela options: 15, 110 and 177
- Jumper selection for normal or loud dBA
- Super-Slide® Bracket - Ease of Supervision Testing
- Input terminals accept 12 to 18 AWG
- Temporal 4 pattern available when used with Hochiki HTSM Synchronization Module
- Temporal 4 520 Hz measured per ANSI/UL 2075
- Tamperproof re-entrant style grill and locking screw (optional use)
- Available color(s): red or off-white



HX93 SERIES

MINI-HORNS

STANDARD FEATURES

- Nominal voltage 12VDC and 24VDC
- Jumper for selectable temporal 3 or continuous tone
- Horn frequency of 3100Hz
- Input terminals support 12 to 18 AWG
- Low current consumption
- Textured finish high impact plastic faceplate
- Available color(s): red or off-white



WHE SERIES

WEATHERPROOF HORN/STROBES

STANDARD FEATURES

- Nominal voltage 24VDC
- Unit is shipped with WHES24-75 Candela Strobe or WHEC24-75 Candela Horn/Strobe
- Switch selection for high dBA
- Switch for mechanical and 2400Hz tone
- Switch for continuous tone
- Input terminals supports 12 to 18 AWG
- Tamperproof re-entrants grill
- Wide voltage range of 16-33 VDC
- Separate horn and strobe functions
- Available color(s): red or off-white



FBB-150K

FIRE ALARM BELLS

STANDARD FEATURES

- Rating DC 24V
- Operating Temperature Range -10°C -40°C
- Body: Aluminum alloy die cast Baked Paint finish
- Mounting Metal: Steel, 1.2mm thickness, Chrome-plated

TESTING ACCESSORIES



SOLO 461

CORDLESS HEAT DETECTOR TEST KIT

STANDARD FEATURES

- Includes 2 NiMH Batteries and charger
- Lightweight and simple to use
- Suits fixed temp, combination, and ROR detectors up to 194°
- Unique IR activation and Cross Air Technology for optimum energy use
- Directs heat straight at detector for rapid activation



SOLO 330

AEROSOL DISPENSER

STANDARD FEATURES

- Universal, lightweight, and simple to use
- Suits detectors up to 4" in diameter, clear cup for view of detector LED
- Spring-loaded for drop ceiling; Swing frame allows for use at any angle
- For use with SOLO A4 or Smoke Centurion (M8) aerosol smoke detectors testers
- UL Listed; Manufacturer Approved, Lifetime Limited Warranty



SOLO 200

UNIVERSAL DETECTOR REMOVAL TOOL

STANDARD FEATURES

- For use with SOLO Access Poles
- Universal design suits widest range of detectors
- Color-coded heads rotate to provide a combination of sizes and settings
- Lifetime limited warranty



SOLO C6

CO DETECTOR TESTER

STANDARD FEATURES

- Safe, controllable, genuine nonflammable CO gas
- Only CO tester approved for Systems Sensor and Interlogix CO Alarms
- Fast test and reset times
- UL Listed; Manufacturer Approved, Designed for use with system monitored CO detectors



SOLO A5

SOLO SMOKE AEROSOLS

STANDARD FEATURES

- Common with other pressurised aerosols
- Solo A5 is a flammable product
- Available in a standard 250ml can similar in price to Solo A3
- Compatible with the Solo 330 dispenser



SMOKE SABRE

2.6 OZ AEROSOL SMOKE DETECTOR TESTER

STANDARD FEATURES

- Faster detector activation and clearing
- More tests per can; lowest cost per test
- Eco-responsible 100% biodegradable sabre; ozone friendly, no CFC's
- UL Listed, Manufacturer Approved, Silicone Free

HOCHIKI ASIA PACIFIC OFFICES ACROSS ASIA PACIFIC

HOCHIKI ASIA PACIFIC PTE. LTD.

82 Ubi Ave 4,
#06-02 Edward Boustead Centre,
Singapore 408832

+65 6841 9728
sales@hochikiasiapacific.com
<https://www.hochikiasiapacific.com>

HOCHIKI HO CHI MINH REPRESENTATIVE OFFICE

3rd Floor Rubicon Building,
19 Luong Dinh Cua Street,
An Khanh Ward, Thu Duc City,
Ho Chi Minh City, Vietnam

+84 28 3636 6806
sales@hochikiasiapacific.com
<https://www.hochikiasiapacific.com>

HOCHIKI JAKARTA REPRESENTATIVE OFFICE

Mid Plaza 2, 8th Floor,
Jalan Jenderal Sudirman Kav 10-11,
Karet Tengsin, Kecamatan Tanah Abang,
Kota Jakarta Pusat Daerah Khusus
Ibukota Jakarta 10220, Indonesia

+6221 5700078
sales@hochikiasiapacific.com
<https://www.hochikiasiapacific.com>

HOCHIKI (THAILAND) COMPANY LIMITED

BB Building, 10th Floor,
Unit 1011 54 Sukhumit 21,
Kwaeng Klong Toey Nua Khet Wattana
Bangkok 10110, Thailand

+65 6841 9728
info@hochiki.co.th
<https://www.hochikiasiapacific.com>

HOCHIKI HANOI REPRESENTATIVE OFFICE

Room No. 802, 8th Floor, CEO Building
Pham Hung Street, Me Tri Ward,
Nam Tu Liem District,
Ha Noi City, Vietnam

+84 28 3636 6806
sales@hochikiasiapacific.com
<https://www.hochikiasiapacific.com>

HOCHIKI MANILA REPRESENTATIVE OFFICE

Unit No.509 FSS Building II,
No. 18 Scout Tuason Corner,
Scout Castor Streets, Brg, Laging Handa,
Quezon City, Metro Manila, Philippines

+63 2 83658112
sales@hochikiasiapacific.com
<https://www.hochikiasiapacific.com>

HEADQUARTER

HOCHIKI CORPORATION

10-42 Kamiosaki 2-Chome
Shinagawa-Ku
Tokyo 141-8660
Japan

+81-(3)-3444-4111
overseas@hochiki.co.jp
<https://www.hochiki.co.jp>





Hochiki reserves the right to alter the specifications of its products from time to time without notice. Although every effort has been made to ensure the accuracy of the information contained in this document, it is not warranted or represented by Hochiki to be a complete and up-to-date description. Check online for current version.

HOCHIKI ASIA PACIFIC

82 Ubi Ave 4 #06-02 Edward Boustead Centre Singapore 408832
T: +65 6841 9728 | E: sales@hochikiasiapacific.com | W: www.hochikiasiapacific.com

